

## GROW: In a Deepening Relationship with Christ

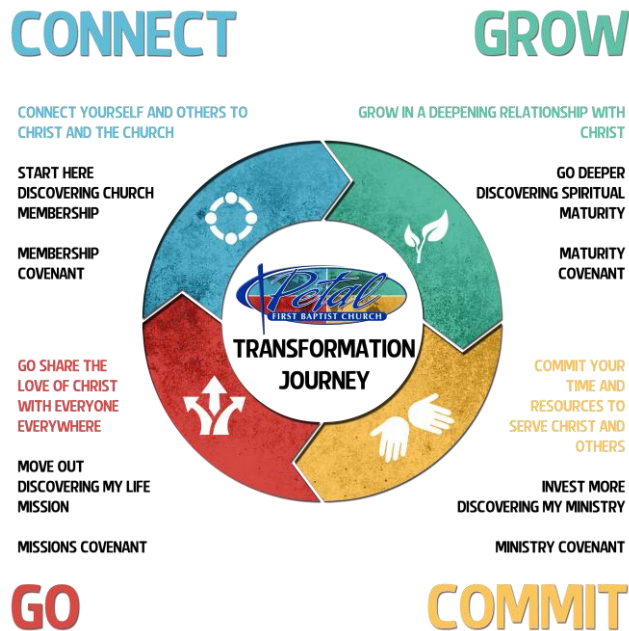
- ✓ Grow deeper in your personal walk - Spend time reading through the Word of God this year, spend more time in prayer, scripture memory, fasting, etc. THIS IS KEY!!

## COMMIT: Your Time/Resources to Serve Christ & Others

- ✓ Find your place to serve at our Annual Ministry/Missions Fair and listen to the Lord's voice and direction on a ministry He might be calling you to start or help to start.
- ✓ Take the next step up the Generosity Ladder with Your Giving.

## GO: Share the Love of Christ w/ Everyone Everywhere

- ✓ Be willing to share the Gospel with one person this year
- ✓ To at least one time this year GO and participate in 1 mission experience in 2015.
- ✓ Jerusalem – Petal, Judea – MS, Samaria – US  
Ends of the Earth – Indonesia & Haiti
- ✓ a small group for women and men this year.



## STATE OF THE CHURCH 2016 Pt. 2 “The I Problem And The I Solution”

Joshua 23:1-13; 24:14-28  
January 10, 2016

**REFLECT & REJOICE WHERE WE HAVE BEEN:  
CELEBRATE TRANSFORMATION**

**REMEMBER WHO GOT US HERE: CHRIST JESUS**

**REFOCUS ON WHAT MATTERS MOST: OUR CORE  
CONVICTIONS**

- ✓ Intentional Relationships
- ✓ Transformed Lives
- ✓ Missional Living

**RENEW OUR COMMITMENT: OUR CALL**

**Our Vision** *“We desire to be radically transformed by God into a people He can use to transform others.”*

The End Goal: Transformation

**Our Mission:** *Connect, Grow, Commit, & Go*

**RECOGNIZE THE ENEMY’S I VISION**

- ✓ Intimidate & Isolate Us
- ✓ Infiltrate & Infect Us
- ✓ Insulate & Inoculate Us
- ✓ Indifference
- ✓ Ignore the Word of God

- ✓ Immobilize Us & Imprison Us in Our Sin
- ✓ Independence

### RELY ON GOD'S I VISION

- ✓ Intimacy With the Father
- ✓ Indwell Us & Ignite a Fire in Us
- ✓ Ingest the Word of God
- ✓ Invest in What Will Last
- ✓ Interdependent on One Another
- ✓ Insist on Unity
- ✓ Invigorate Others
- ✓ Influence & Impact Those Around You
- ✓ Investigate & Involve Yourself
- ✓ Invite Others to Come & See - to Respond to Jesus

### RESOLVE TO CONCENTRATE ON THESE AREAS :

**Connect:** Prayer / Front, Middle, Back Door Emphasis /*Start Here: Discovering Church Membership* in January & August

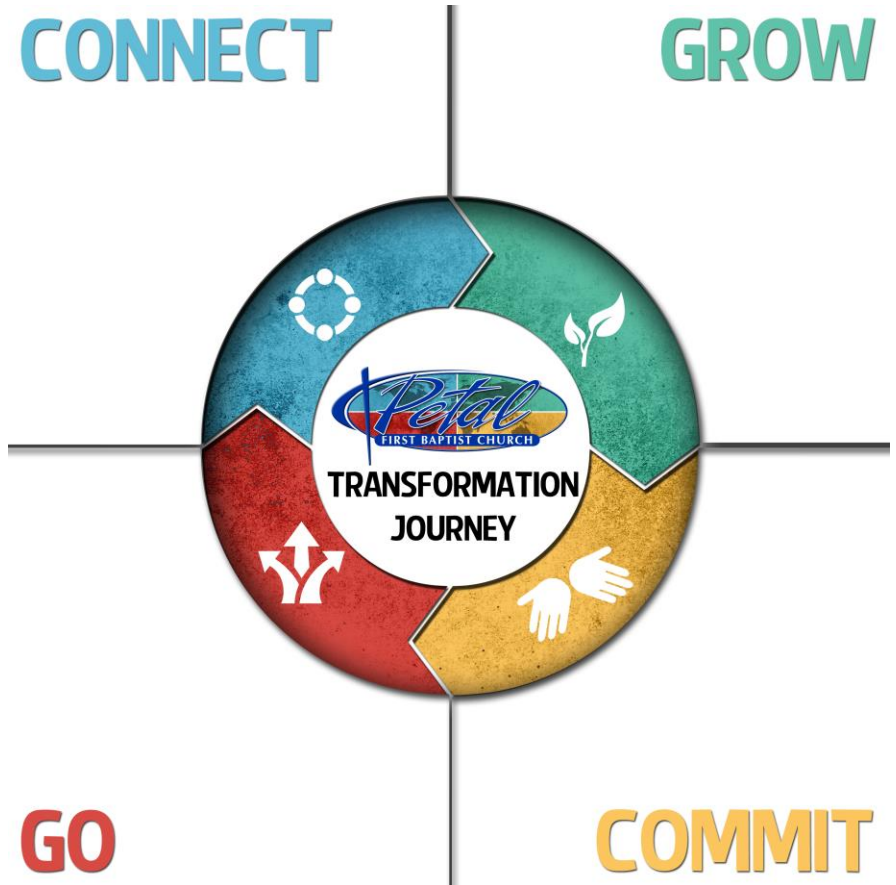
**Grow:** LifeGroups / Discipleship (Small Groups) / Complete *Go Deeper: Discovering Spiritual Maturity* (Spring of 2016)

**Commit:** Financial Peace / Complete *Invest More: Discovering My Ministry* (Fall of 2016)

**Go:** Mississippi / North America Focus / New Petal Ministry Opportunities

### RESPONSE: TAKE THE NEXT STEP

In each box, fill in the next step that you need to take in 2016



### CONNECT: Yourself & Others to Christ & the Church

- ✓ Plan on Being in Worship Every Sunday & Get Deeply Connected to a LifeGroup TODAY
- ✓ Invest & Invite in someone to join you @ Petal FBC – Don't stop asking!
- ✓ Join us for Family Friendly Wednesday Nights
- ✓ With a Ministry for your Age Group: Preschool / Children/ Students / College & Career / Adults / Sr. Adults